

RSV-L4412U

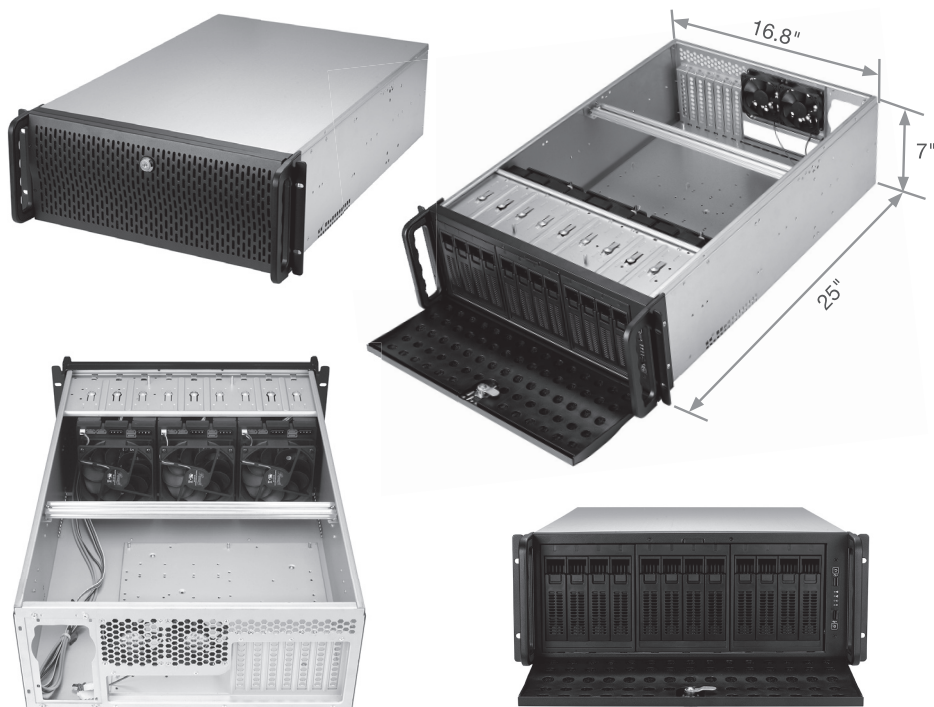
Thank you for purchasing a Rosewill Server Chassis.
Please read the instruction manual before use and retain for future reference.

INTRODUCTION

RSV-L4412U is a 4U rackmount industrial hot-swap chassis for various server computers which supports any E-ATX (12" x 13") and smaller form factor motherboards. It holds PS2 power supply which provides customers with wider selection and more affordable choices depending on the system design purposes. In addition, RSV-L4412U holds 12 hot-swap SATA/SAS bays with a large-scale fan filter and easy-to-use knob key for great serviceability of the system.

To use the Hot-Swap feature, Please set motherboard BIOS to AHCI and format the HDD using AHCI.

PRODUCT OVERVIEW

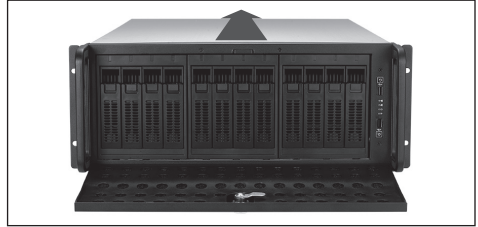


FEATURES

- Carries a total of 12x 3.5" (2.5") hot swappable SATA (I, II & III) or SAS bays.
- Best cooling design carries up to 3x 120mm front cooling fans in the front and 2x 80mm PWM cooling fans in the rear max (all are included in RSV-L4412U).
- Front door with key lock for better security.
- Special design for add-on cards in the system (7 pieces max).
- 2 x USB 3.0 connectors in front panel.

INSTALLATION GUIDE

Top Cover Disassembly



1. Remove the screws from each side of the Chassis (two on each side).
2. Once the screws are removed, push the top cover to remove from the chassis.

Hard Drive Tray Assembly / Disassembly



1. Each HDD Tray has a press button for releasing the hinge. To remove the HDD Tray, first press the button (circled area).
2. Upon pressing the button, the HDD tray will be easily pulled out.
3. To slide in the HDD tray, please make sure to push the tray all the way into the module until hearing a click sound indicating that the arm is fixed into the module.

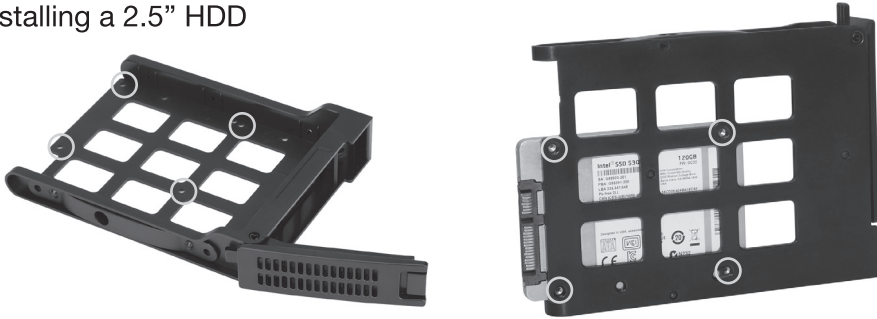
Hard Drive Installation

Installing a 3.5" HDD



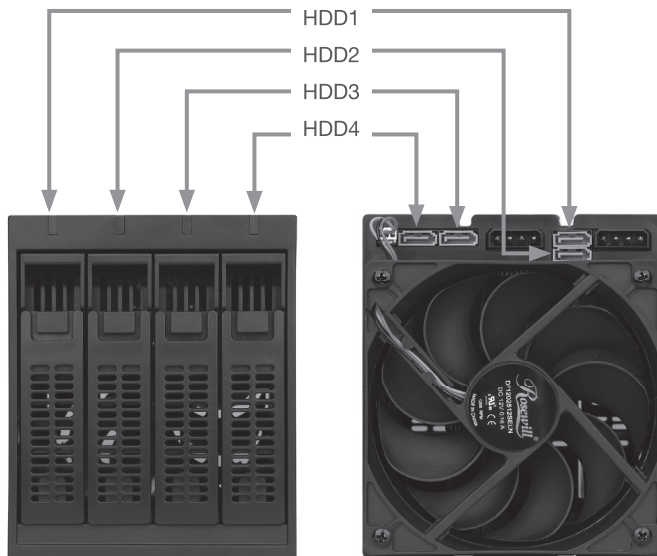
1. To install a 3.5" HDD, please make sure that the 3.5" HDD is aligned with the screw holes on the side of the tray.
2. Once aligned, you can fasten the screws on both sides of the tray to fix the HDD. (Please make sure that the connector of the HDD is facing outward).

Installing a 2.5" HDD



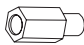


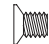
1. To install a 2.5" HDD, please make sure that the 2.5" HDD is aligned with the screw holes on the tray.
2. Once aligned, you can fasten the screws on the tray to fix the HDD. (Please make sure that the connector of the HDD is facing outward)


HOT SWAP MODULE CABLE INSTALLATION



SPECIFICATIONS

Chassis Type	Rackmount
Color	Black & Silver
Case Material	Metal/Steel, 1.0 mm thickness
Motherboard Compatibility	12" x 13" E-ATX and below
Form Factor	4U
Cooling System	
80mm Fans	2 max (All 2x 80mm Fans included)
120mm Fans	3 max (All 3x 120mm Fans included)
Expansion	
Hot-Swap 3.5"/2.5" Drive Bays	12x (SATA I, II, III & SAS supported)
Expansion Slots	7
Physical Specifications	
Control & Indicator	1 x Power Switch + 1 x Reset Switch 1 x LED (Power) + 1 x LED (HDD), 2 x LED (LAN), 2 x USB 3.0
Dimensions (L x W x H)	25 x 16.8 x 7.0 in (635 x 427 x 178 mm)
Weight	Net Weight: 31.9 lbs. (14.5 kg) Gross Weight: 39.7 lbs (18.0 kg)
Package Contents	RSV-L4412U Server Case, Keys, Screws, SATA Cable, Other Accessories

PIC	ITEM	PURPOSE
	Motherboard Standoff x 12 (9 standoffs screwed on the chassis)	Motherboard
	Screw x 6	Power Supply
	Screw x 20	Motherboard
	Screws x 8	Upper Case

PIC	ITEM	PURPOSE
	Buzzer x1 (PC Speaker)	Motherboard
23.6" (60cm) SATA III Cable x 12		



Technical Support Information techsupport@rosewill.com 1-800-575-9885

Please register your product at www.rosewill.com for complete warranty information and support for your product.

RSV-L4412U_B